



USER'S MANUAL

SMOKE ALARM

MODEL SM100



IMPORTANT! PLEASE READ CAREFULLY AND SAVE.

The warnings/limitations card and manual contains important information about your Smoke Alarm's operation. If you are installing this manual—or a copy of it—with the user, you must leave this manual—or a copy of it—by their side.

Para el manual del usuario en español, por favor visite firstalert.com

▲ WARNING!

- This unit will not alert hearing impaired residents. It is recommended that you install special units which use devices like flashing strobe lights to alert hearing impaired residents.
- Do not connect this unit to any other Alarm or auxiliary device. It is a single-station unit that cannot be linked to other devices. Connecting anything else to this unit may prevent it from working properly.
- Unit will not operate without battery power. The Smoke Alarm cannot work until you install the battery in the correct position (Match "+" to "+" and "-" to "-").

▲ CAUTION!

- Do not install this unit over an electrical junction box. Air currents around junction boxes can prevent smoke from reaching the sensing chamber and prevent the unit from alarming. Only AC powered units are intended for installation over junction boxes.
- Do not stand too close to the unit when the Alarm is sounding. It is loud to wake you in an emergency. Exposure to the horn at close range may harm your hearing.
- Do not paint over the unit. Paint may clog the openings to the sensing chamber and prevent the unit from operating properly.

01 INTRODUCTION

Thank you for choosing First Alert® for your Smoke Alarm needs. You have purchased a state-of-the-art Smoke Alarm designed to provide you with early warning of a fire. Please take the time to read this manual and make the Smoke Alarm an integral part of your family's safety plan.

BASIC SAFETY INFORMATION

IMPORTANT!

- Dangers, Warnings, and Cautions alert you to important operating instructions or to potentially hazardous situations. Pay special attention to these items.
- This Smoke Alarm is approved for use in single-family residences. It is **NOT** designed for marine or RV use.

▲ CAUTION!

- The Smoke Alarm will only indicate the presence of smoke that reaches the sensor.
- The Smoke Alarm is not designed to sense gas, heat or flames.

▲ WARNING!

- This Smoke Alarm cannot operate without working batteries. Removing the batteries for any reason, or failing to replace the batteries at the end of their service life, removes your protection.
- NEVER** ignore any Alarm. See "If Your Smoke Alarm Sounds" for more information on how to respond to an Alarm. Failure to respond can result in injury or death.
- The Silence Features are for your convenience only and will not correct a problem. See "Using the Silence Features" for details. Always check your home for a potential problem after any Alarm. Failure to do so can result in injury or death.
- Test this Smoke Alarm once a week. If the Alarm ever fails to test correctly, have it replaced immediately! If the Alarm is not working properly, it cannot alert you to a problem.

02 ABOUT SMOKE ALARMS

TYPES OF ALARMS

All these Smoke Alarms are designed to provide early warning of fires if located, installed and cared for as described in the user's manual. If smoke reaches the Alarm, if you are unsure which type of unit to install, refer to NFPA (National Fire Protection Association) 72 (National Fire Alarm and Signaling Code) and NFPA 101 (Life Safety Code). National Fire Protection Association, One Batterymarch Park, Quincy, MA 02269-9101. Local building codes may also require specific units in new construction or in different areas of the home.

Battery (DC) operated Smoke Alarms: Provide protection even when electricity fails, provided the batteries are fresh and correctly installed. Units are easy to install, and do not require professional installation. They do not, however, provide interconnected functionality.

AC powered Smoke Alarms: Can be interconnected so if one unit senses smoke, all units Alarm. They do not operate if electricity fails.

AC with battery (DC) back-up: will operate if electricity fails, provided the batteries are fresh and correctly installed. AC and AC/DC units must be installed by a qualified electrician.

Smoke Alarms for Solar or wind energy users and battery backup power systems: AC powered Smoke Alarms should only be operated with true or pure sine wave inverters. Operating this Smoke Alarm with most battery powered UPS (uninterruptible power supply) products or square wave or "quasi sine wave" inverters will **damage the Alarm**. If you are not sure about your inverter or UPS type, please consult with the manufacturer to verify.

Smoke Alarms for the hearing impaired: Special purpose Smoke Alarms should be installed for the hearing impaired. They include a visual Alarm and an audible Alarm horn, and meet the requirements of the Americans with Disabilities Act. These units can be interconnected so if one unit senses smoke, all units Alarm.

Smoke Alarms are not to be used with detector guards unless the combination has been evaluated and found suitable for that purpose.

All First Alert® Smoke Alarms conform to regulatory requirements, including UL217 and are designed to detect particles of combustion. Smoke particles of varying number and size are produced in all fires.

Ionization technology is generally more sensitive than photoelectric technology at detecting small particles, which tend to be produced in greater amounts by flaming fires, which consume combustible materials rapidly and spread quickly. Sources of these fires may include paper burning in a wastebasket, or a grease fire in the kitchen.

Photoelectric technology is generally more sensitive than ionization technology at detecting large particles, which tend to be produced in greater amounts by smoldering fires, which may smolder for hours before bursting into flame. Sources of these fires may include cigarettes burning in couches or bedding.

For maximum protection, use both types of Smoke Alarms on each level and in every bedroom of your home.

03 INSTALLATION

WHERE TO INSTALL THIS ALARM

The National Fire Protection Association (NFPA), recommends one Smoke Alarm on every floor, in every sleeping area, and in every bedroom. In new construction, the Smoke Alarms must be AC powered and interconnected. See "Agency Placement Recommendations" for details. For additional coverage, it is recommended that you install a Smoke Alarm in all rooms, halls, storage areas, finished attics, and basements, where temperatures normally remain between 40° F (4.4° C) and 100° F (37.8° C). Make sure no door or other obstruction could keep smoke from reaching the Smoke Alarms.

IN GENERAL, INSTALL SMOKE ALARMS:

- On every level of your home, including finished attics and basements.
- Inside every bedroom, especially if people sleep with doors closed.
- In the hall near every sleeping area. If your home has multiple sleeping areas, install a unit in each. If a hall is over 40 feet (12 meters) long, install an Alarm at each end.
- At the top of the first-to-second level stairway, and at bottom of basement stairway.

IMPORTANT!

Specific requirements for Smoke Alarm installation vary from state to state and from region to region. Check with your local Fire Department for current requirements in your area. It is **recommended AC or AC/DC units be interconnected for added protection.**

RECOMMENDED PLACEMENT:



Smoke Alarm
One on every level and in every bedroom

Carbon Monoxide Alarm
One on every level and in every bedroom

Fire Extinguisher
One on every level, plus kitchen and garage



WHERE NOT TO INSTALL THIS ALARM

FOR BEST PERFORMANCE, IT IS RECOMMENDED YOU AVOID INSTALLING SMOKE ALARMS IN THESE AREAS:

- Where combustion particles are produced. Combustion particles form when something burns. Areas to avoid include poorly ventilated kitchens, garages, and furnace rooms. Keep units at least 20 feet (6 meters) from the sources of combustion particles (stove, furnace, water heater, space heater) if possible. In areas where a 20-foot (6-meter) distance is not possible – in modular, mobile, or smaller homes, for example – it is recommended the Smoke Alarm be placed as far from these fuel-burning sources as possible. The placement recommendations are intended to keep these Alarms at a reasonable distance from a fuel-burning source, and thus reduce "unwanted" Alarms. Unwanted Alarms can occur if a Smoke Alarm is placed directly next to a fuel-burning source. Ventilate these areas as much as possible.
- In air streams near kitchens. Air currents can draw cooking smoke into the sensing chamber of a Smoke Alarm near the kitchen.
- In very damp, humid or steamy areas, or directly near bathrooms with showers. Keep units at least 10 feet (3 meters) away from showers, saunas, dishwashers, etc.
- Where the temperatures are regularly below 40° F (4.4° C) or above 100° F (37.8° C), including unheated buildings, outdoor rooms, porches, or unfinished attics or basements.
- In very dusty, dirty, or greasy areas. Do not install a Smoke Alarm directly over the stove or range. Keep laundry room Smoke Alarms free of dust or lint.
- Near fresh air vents, ceiling fans, or in very drafty areas. Drafts can blow smoke away from the unit, preventing it from reaching the sensing chamber.
- In insect infested areas. Insects can clog openings to the sensing chamber and cause unwanted Alarms.
- Less than 12 inches (305mm) away from fluorescent lights. Electrical "noise" can interfere with the sensor.
- In "dead air" spaces. "Dead air" spaces may prevent smoke from reaching the Smoke Alarm.

AVOIDING DEAD AIR SPACES
"Dead air" spaces may prevent smoke from reaching the Smoke Alarm. To avoid dead air spaces, follow the installation recommendations below.

On ceilings, install Smoke Alarms as close to the center of the ceiling as possible. If this is not possible, install the Smoke Alarm at least 4 inches (102 mm) from the wall or corner.

For wall mounting (if allowed by building codes), the top edge of Smoke Alarms should be placed between 4 inches (102 mm) and 12 inches (305 mm) from the wall/ceiling line, below typical "dead air" spaces.

On a peaked, gabled, or cathedral ceiling, install the first Smoke Alarm within 3 feet (0.9 meters) of the peak of the ceiling, measured horizontally. Additional Smoke Alarms may be required depending on the length, angle, etc. of the ceiling's slope. Refer to NFPA 72 for details on requirements for sloped or peaked ceilings.

HOW TO INSTALL THIS ALARM

This unit is designed to be mounted on the ceiling, or on the wall if necessary.

Tools you will need: pencil, drill with 3/16" (5 mm) drill bit, standard flathead screwdriver, hammer.

THE PARTS OF THIS SMOKE ALARM

- Smoke LED (RED)
- Power LED (GREEN)
- Test/Silence button

- Mounting Bracket
- Locking pins (break out of bracket)
- Mounting Slots
- Latch to open battery compartment
- Battery compartment – install 9V battery here
- Turn this way to remove
- Turn this way to attach

FOLLOW THESE SIMPLE STEPS

- Choose a location. See "Where to Install This Alarm" for reference.
WARNING! Do not install this Alarm over an existing electrical box. Only AC powered units are intended for installation over electrical boxes.
- Hold the bracket against the ceiling or wall and make a mark inside each hole where you will drill your mounting hole. To install on the wall, ensure that the round portions of the holes are vertical. Put the Alarm where it won't get covered with dust when it drills the holes.
- Use a 3/16" (5mm) drill bit to drill through the marks you made for the mounting holes.
- Insert the plastic screw anchors in the plastic bag with the screws into the holes. Tap the screw anchors gently with a hammer, if necessary, until they are flush with the ceiling or wall.
- Insert the screws but do not tighten completely. Leave them about 1/8" (3mm) away from the wall.
- Activate the battery. With the battery compartment open, install the battery so the terminals on the battery match the terminals on the Smoke Alarm. Match "+" to "+" and "-" to "-". Push the battery in until it snaps in securely and cannot be shaken loose. If the battery is not snapped in completely, the unit cannot receive battery power. The Smoke Alarm may beep briefly when you install the battery—this is normal.
- Position the base of the Smoke Alarm over the mounting bracket and turn. The Alarm can be positioned over the bracket every 60°. Turn the Smoke Alarm clockwise (right) until the unit is in place.
- Test the Smoke Alarm. See "Weekly Testing."

Action	What You Will See & Hear
Normal Operations	Horn: Silent; Power LED: Flashes GREEN 1 time every minute; Smoke LED: Off
When You Test the Alarm	Horn: Short "chirp", then 3 beeps, pause, 3 beeps; Power LED: Flashes GREEN 1 time; Smoke LED: Flashes RED in sync with horn
If Battery Becomes Low	Horn: Chirps 1 time every minute; Power LED: Flashes Green 1 time every minute; Smoke LED: Off
Low Battery Signal is Silenced	Horn: Silent (for up to 8 hours); Power LED: Flashes Green 1 time every minute; Smoke LED: Off
Alarm is Not Operating Properly (Malfunction Signal)	Horn: 3 chirps every minute; Power LED: Flashes Green 3 times every minute; Smoke LED: Off
Alarm has reached End of Life	Horn: 5 chirps every minute; Power LED: Flashes Green 5 times every minute; Smoke LED: Off
End of Life Signal is Silenced	Horn: Silent (for up to 2 days, 14 days total); Power LED: Flashes Green 5 times every minute; Smoke LED: Off
Smoke is Detected	Horn: 3 beeps, pause, 3 beeps, repeat; Power LED: Off; Smoke LED: Flashes Red in sync with horn
Smoke Alarm is Silenced (up to 15 Minutes)	Horn: Off; Power LED: Off; Smoke LED: Flashes Red 3 times, pause, 3 times, repeat.

04 ALARM FEATURES

- Easy installation:** Add protection in minutes.

LOCKING FEATURES

The optional locking features are designed to discourage unauthorized removal of the battery or Alarm. It is not necessary to activate the locks in single-family households where unauthorized battery or Alarm removal is not a concern.

These Smoke Alarms have two separate locking features: one to lock the battery compartment, and the other to lock the Smoke Alarm to the mounting bracket. You can choose to use either feature independently, or use them both.

Tools you will need: Needle-nose pliers or utility knife, standard flathead screwdriver

Both locking features use locking pins, which are molded into the mounting bracket. Using needle nose pliers or a utility knife, remove one or both pins from the mounting bracket, depending on how many locking features you want to use.

IMPORTANT!

To permanently remove the locking pin, insert a flathead screwdriver between the locking pin and the lock and pry the pin out of the lock.

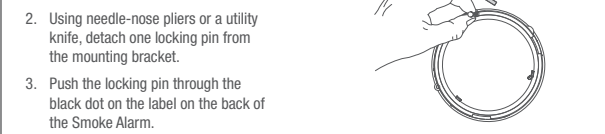
TO LOCK THE BATTERY COMPARTMENT

Do not lock the battery compartment until you have installed the battery and tested the unit.

- Push and release the Test/Silence button. The Alarm will "chirp" and then sound: 3 beeps, pause, 3 beeps, pause.

IMPORTANT!

Do not lock the battery compartment until you have installed the battery and tested the unit. If you are unsure which type of unit to install, refer to NFPA (National Fire Protection Association) 72 (National Fire Alarm and Signaling Code) and NFPA 101 (Life Safety Code). National Fire Protection Association, One Batterymarch Park, Quincy, MA 02269-9101. Local building codes may also require specific units in new construction or in different areas of the home.



TO UNLOCK THE BATTERY COMPARTMENT

- Remove the Smoke Alarm from the mounting bracket. If the unit is locked to the bracket, see the section "To Unlock the Mounting Bracket."
- Insert a flathead screwdriver under the head of the locking pin, and gently pry it out of the battery compartment lock. (If you plan to relock the battery compartment, save the locking pin.)
- To relock the battery compartment, close the battery door and reinsert locking pin in lock.
- Reattach the Smoke Alarm to the mounting bracket.

IMPORTANT!

When replacing the batteries, always test the Alarm before relocking the battery compartment.

TO LOCK THE MOUNTING BRACKET

- Using needle-nose pliers, detach one locking pin from mounting bracket.
- Insert the locking pin into the lock located on the pivoting hinge of the battery compartment.
- When you attach the Smoke Alarm to the mounting bracket, the locking pin's head will fit into a notch on the bracket.

TO UNLOCK THE MOUNTING BRACKET

- Insert a flathead screwdriver between the mounting bracket pin and the mounting bracket.
- Pry the Alarm away from the bracket by turning both the screwdriver and the Alarm counterclockwise (left) at the same time.

05 TESTING & MAINTENANCE

WEEKLY TESTING

▲ WARNING!

- NEVER** use an open flame of any kind to test this unit. You might accidentally damage or set fire to the unit or to your home.
- DO NOT** stand close to the Alarm when the horn is sounding. Exposure at close range may be harmful to your hearing. When testing, step away when horn starts sounding.

▲ CAUTION!

It is important to test this unit every week to make sure it is working properly. Using the Test/Silence button is the recommended way to test this Smoke Alarm. Press and hold the Test/Silence button on the cover of the unit until the Alarm sounds (the unit may continue to Alarm for a few seconds after you release the button). If it does not Alarm, make sure the unit is receiving power and test it again. If it still does not Alarm, replace it immediately. During testing you will hear a loud, repeating horn pattern: 3 beeps, pause, 3 beeps, pause.

REGULAR MAINTENANCE

This unit has been designed to be as maintenance free as possible, but there are a few simple things you must do to keep it working properly.

- Test it at least once a week.
- Clean the Smoke Alarm at least once a month; gently vacuum the outside of the Smoke Alarm using your household vacuum's soft brush attachment. Test the Smoke Alarm. Never use water, cleaners or solvents since they may damage the unit.
- If the green power LED flashes 2 times every minute (horn is silent) it means that the Alarm needs to be cleaned as indicated above. If green LED continues to flash, please call Consumer Support.
- If the Smoke Alarm becomes contaminated by excessive dirt, dust and/or grime, and cannot be cleaned to avoid unwanted Alarms, replace the unit immediately.
- Relocate the unit if it sounds frequent unwanted Alarms. See "Where This Alarm Should Not Be Installed" for details.
- When the battery becomes weak, the Smoke Alarm unit will "chirp" about once a minute (the low battery warning). This low battery warning should last for 7 days, but you should replace the battery immediately to continue your protection.
- Protect or cover the alarm when doing any maintenance to home i.e. sanding floors, painting, drywall patching, etc. to prevent contamination.

CHOOSING A REPLACEMENT BATTERY:

Your Smoke Alarm requires one standard 9V battery. The following batteries are acceptable as replacements: Duracell #MN1604, (Ultra) #MX1604, Eveready (Energizer) #522, Eveready (Energizer) #1222. These batteries are available at many local retail stores.

▲ WARNING!

- Always use the exact batteries specified by this User's Manual. DO NOT use rechargeable batteries. Clean the battery contacts and also those of the device prior to battery installation. Install batteries correctly with regard to polarity (+ and -).**
- Please dispose of or recycle used batteries properly, following any local regulations. Consult your local waste management authority or recycling organization to find an electronics recycling facility in your area. DO NOT DISPOSE OF BATTERIES IN FIRE. BATTERIES MAY EXPLODE OR LEAK.**

▲ WARNING!

- Keep battery out of reach of children. In the event a battery is swallowed, immediately contact your poison control center, your physician, or the National Battery Ingestion hotline at 202-625-3333 as serious injury may occur.**

IMPORTANT!

Actual battery service life depends on the Alarm and the environment in which it is installed. All the batteries specified above are acceptable replacement batteries for this unit. Regardless of the manufacturer's suggested battery life, you MUST replace the battery immediately once the unit starts "chirping" (the "low battery warning").

TROUBLESHOOTING GUIDE

IF THE ALARM...	PROBLEM...	YOU SHOULD...
Green Power light is off. Unit will not Alarm when you press the Test/Silence button	Battery may be dead or missing.	Replace battery*
Horn "chirps" and Green Power LED flashes 1 time every minute	Battery is low	Replace battery**
Horn "chirps" and Green Power LED flashes 3 times every minute	MALFUNCTION SIGNAL. Device is not working properly, and needs to be replaced.	If unit is out of warranty, contact Consumer Support to process a warranty replacement.
Horn "chirps" and Green Power LED flashes 5 times every minute	END OF LIFE SIGNAL. Alarm needs to be replaced.	Replace Alarm immediately
Power LED flashes Green 2 times every minute	Alarm requires cleaning	Clean Alarm then press and release the test button. See "Regular Maintenance" section. If Green LED continues to flash, contact Consumer Support.

Alarm goes back into Alarm after you press the Test/Silence button to silence the Alarm	Smoke levels are still potentially dangerous	Refer to "If your Smoke Alarm Sounds" for details on how to respond to an Alarm. EVACUATE your home immediately and call 911.
Smoke Alarm sounds when no smoke is visible.	Unwanted Alarm may be caused by non-emergency source like cooking smoke.	Silence Alarm using Test/Silence button. Clean the Alarm's cover with a soft, clean cloth. If frequent unwanted Alarms continue, relocate your Alarm. Alarm may be too close to a kitchen, cooking appliance or steamy bathroom.
*For a list of acceptable replacement batteries, see "Regular Maintenance."		
†If you have questions that cannot be answered by reading this manual, call the Consumer Support Team at 1-800-323-9005		

FIRE SAFETY TIPS

Follow safety rules and prevent hazardous situations: 1) Use smoking materials properly. Never smoke in bed. 2) Keep matches or lighters away from children; 3) Store flammable materials in proper containers; 4) Keep electrical appliances in good condition and don't overload electrical circuits; 5) Keep stoves, barbecues, grills, fireplaces and chimneys grease- and debris-free; 6) Never leave anything cooking on the stove unattended; 7) Keep portable heaters and open flames, like candles, away from flammable materials; 8) Don't let rubbish accumulate. Keep Alarms clean, and test them weekly. Replace Alarms immediately if they are not working properly. Smoke Alarms that do not work cannot alert you to a fire. Keep at least one working fire extinguisher on every level, and an additional one in the kitchen. Have fire escape ladders or other reliable means of escape from an upper level in case stairs are blocked; 9) Have an escape plan and practice it regularly.

06 IF THIS SMOKE ALARM SOUNDS RESPONDING TO AN ALARM

During an Alarm, you will hear a loud, repeating horn pattern: 3 beeps, pause, 3 beeps, pause.

▲ WARNING!

- If the unit Alarms get everyone out of the house immediately.
- If the unit Alarms and you are not testing the unit, it is warning you of a potentially dangerous situation that requires your immediate attention. NEVER ignore any Alarm. Ignoring the Alarm may result in injury or death.
- Never remove the batteries from a battery operated Smoke Alarm to stop an unwanted Alarm (caused by cooking smoke, etc.). Removing batteries disables the Alarm so it cannot sense smoke, and removes your protection. Instead open a window or fan the smoke away from the unit. The Alarm will reset automatically.

WHAT TO DO IN CASE OF FIRE

- Don't panic, stay calm. Follow your family escape plan.
- Get out of the house as quickly as possible. Don't stop to get dressed or collect anything.
- Feel doors with the back of your hand before opening them. If a door is cool, open it slowly. Don't open a hot door. Keep doors and windows closed, unless you must escape through them.
- Cover your nose and mouth with a cloth (preferably damp). Take short, shallow breaths.
- Meet at your planned meeting place outside your home, and do a head count to make sure everybody got out safely.
- Call the Fire Department as soon as possible from outside. Give your address, then your name.
- Never go back inside a burning building for any reason.
- Contact your Fire Department for ideas on making your home safer.

▲ WARNING!

Alarms have various limitations. See "General Limitations of Smoke Alarms" for details.

07 USING THE SILENCE FEATURES

The Silence Feature can temporarily quiet an unwanted Alarm for up to 15 minutes. To use this feature, press the "Test/Silence" button. The Alarm remains functional. The LED will flash 3 times every few seconds (for up to 15 minutes) to remind you the Alarm has been silenced. The flashing LED will stop when the unit returns to normal operation.

▲ WARNING!

The Silence Feature does not disable the unit—it makes it temporarily less sensitive to smoke. For your safety, if smoke around the unit is dense enough to suggest a potentially dangerous situation, the unit will stay in Alarm or may re-Alarm quickly. If you do not know the source of the smoke, do not assume it is an unwanted Alarm. Not responding to an Alarm can result in property loss, injury, or death. If the unit will not silence and no heavy smoke is present, or if it stays in silence mode continuously, it should be replaced immediately.

SILENCING THE LOW BATTERY WARNING

This Silence Feature can temporarily quiet the Low Battery Warning "chirp". Press the Test/Silence button on the Alarm. The Green light flashes normally, once every minute, during Low Battery Warning silence. After time, the low battery "chirp" will resume. Replace the battery immediately.

SILENCING THE END OF LIFE SIGNAL

This Silence Feature can temporarily quiet the End of Life warning "chirp" for up to 2 days. You can silence the End of Life warning "chirp" by pressing the Test/Silence button. The horn will chirp, acknowledging that the End of Life Silence Feature has been activated.

After approximately 2 days, the End of Life "chirp" will resume. The timer shall not be able to reset after 14 days following the initial end-of-life signal.

IF YOU SUSPECT A PROBLEM

Smoke Alarms may not operate properly because of a dead, missing or weak batteries, a build-up of dirt, dust or grease on the Smoke Alarm cover, or installation in an improper location. Clean the Smoke Alarm as described in "Regular Maintenance" and install fresh batteries, then test the Smoke Alarm again. If it fails to test properly when you use the test button, or if the problem persists, replace the Smoke Alarm immediately.

- If you hear 3 or 5 chirps every minute or so, replace the Smoke Alarm.
- If you experience frequent non-emergency Alarms (like those caused by cooking smoke), try relocating the Smoke Alarm.
- If the Alarm sounds when no smoke is visible, try cleaning or relocating the Smoke Alarm. The cover may be dirty.

Do not try fixing the Alarm yourself — this will void your warranty!

If the Smoke Alarm is still not operating properly, and it is still under warranty, please see "How to Obtain Warranty Service" in the Limited Warranty.

08 REGULATORY INFORMATION FOR SMOKE ALARMS

RECOMMENDED LOCATIONS FOR SMOKE ALARMS

INSTALLING SMOKE ALARMS IN SINGLE-FAMILY RESIDENCES

The National Fire Protection Association (NFPA), recommends one Smoke Alarm on every floor, in every sleeping area, and in every bedroom. In new construction, the Smoke Alarms must be AC powered and interconnected. See "Agency Placement Recommendations" for details. For additional coverage, it is recommended that you install a Smoke Alarm in all rooms, halls, storage areas, finished attics, and basements, where temperatures normally remain between 40° F (4.4° C) and 100° F (37.8° C). Make sure no door or other obstruction could keep smoke from reaching the Smoke Alarms.

MORE SPECIFICALLY, INSTALL SMOKE ALARMS:

- On every level of your home, including finished attics and basements.
- Inside every bedroom, especially if people sleep with the door partly or completely closed.
- In the hall near every sleeping area. If your home has multiple sleeping areas, install a unit in each. If a hall is more than 40 feet long (12 meters), install a unit at each end.
- At the top of the first-to-second floor stairway, and at the bottom of the basement stairway.

IMPORTANT!

Specific requirements for Smoke Alarm installation vary from state to state and from region to region. Check with your local Fire Department for current requirements in your area. It is **recommended AC or AC/DC units be interconnected for added protection.**