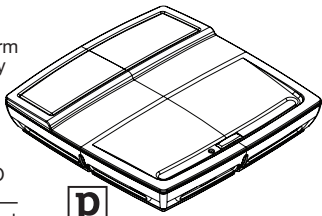


First Alert USER'S MANUAL

10 YEAR COMBINATION CARBON MONOXIDE & SMOKE ALARM WITH VOICE & LOCATION

Features:

- Separate sensors to detect smoke and CO; the two alarm systems work independently.
- Voice with programmable location.
- Separate audible and visual signals to indicate alarm levels of smoke or CO.
- Sealed-In Lithium Battery**—Sealed-in lithium power supply; no battery replacement required over the 10 year life of the alarm.



UL STD 217 AND UL STD 2034
Model PC910V

M08-0408-006 K1 02/14 Printed in Mexico

IMPORTANT! PLEASE READ CAREFULLY AND SAVE.

This user's manual contains important information about your Combination Carbon Monoxide & Smoke Alarm's operation. If you are installing this Alarm for use by others, you must leave this manual—or a copy of it—with the end user.

Para el manual del usuario en español, por favor visite www.firstalert.com.

TABLE OF CONTENTS

Introduction1

Fire Safety Tips1

Basic Safety Information1

Step by Step Guide to Programming This Alarm2

What You Will See and Hear With This Alarm2

Installation2-3

Where to Install This Alarm2-3

Where This Alarm Should NOT Be Installed3

How to Install This Alarm3

If Your Smoke/CO Alarm Sounds4

What To Do First—Identify The Type Of Alarm4

If the CO Alarm Sounds4

If the Smoke Alarm Sounds4

Using the Silence Features4-5

Weekly Testing5

Regular Maintenance5

What You Need To Know About CO5-6

What is CO?5

Symptoms of CO Poisoning6

Potential Sources of CO in the Home6

How Can I Protect My Family From CO Poisoning?6

Regulatory Information For Smoke/CO Alarms6-7

Regulatory Information for CO Alarms6

Regulatory Information for Smoke Alarms6-7

Recommended Locations for Smoke Alarms7

About Smoke Alarms7

Special Compliance Considerations7-8

General Limitations Of Smoke/CO Alarms8

Troubleshooting Guide9-10

Limited Warranty9-10

© 2014 BRK Brands, Inc. All rights reserved.
 Manufactured by BRK Brands, Inc.
 3901 Liberty Street Road, Aurora, IL 60504-8122
 Customer Affairs: (800) 323-9005 • www.firstalert.com

All BRK® and First Alert® Smoke Alarms conform to regulatory requirements, including UL217 and are designed to detect particles of combustion. Smoke particles of varying number and size are produced in all fires.

Ionization technology is generally more sensitive than photo-electric technology at detecting small particles, which tend to be produced in greater amounts by flaming fires, which consume combustible materials rapidly and spread quickly. Sources of these fires may include paper burning in a wastebasket, or a grease fire in the kitchen.

Photoelectric technology is generally more sensitive than ionization technology at detecting large particles, which tend to be produced in greater amounts by smoldering fires, which may smolder for hours before bursting into flame. Sources of these fires may include cigarettes burning in couches or bedding.

For maximum protection, use both types of Smoke Alarms on each level and in every bedroom of your home.

INTRODUCTION
FIRE SAFETY TIPS

Follow safety rules and prevent hazardous situations: 1) Use smoking materials properly. Never smoke in bed. 2) Keep matches or lighters away from children; 3) Store flammable materials in proper containers; 4) Keep electrical appliances in good condition and don't overload electrical circuits; 5) Keep stoves, barbecue grills, fireplaces and chimneys grease- and debris-free; 6) Never leave anything cooking on the stove unattended; 7) Keep portable heaters and open flames, like candles, away from flammable materials; 8) Don't let rubbish accumulate. Keep alarms clean, and test them weekly. Replace alarms immediately if they are not working properly. Smoke Alarms that do not work cannot alert you to a fire. Keep at least one working fire extinguisher on every floor, and an additional one in the kitchen. Have fire escape ladders or other reliable means of escape from an upper floor in case stairs are blocked.

BASIC SAFETY INFORMATION
IMPORTANT!

- Dangers, Warnings, and Cautions alert you to important operating instructions or to potentially hazardous situations. Pay special attention to these items.
- This Smoke/CO Alarm is approved for use in single-family residences. It is NOT designed for marine or RV use.

CAUTION!

- This combination Smoke/Carbon Monoxide Alarm has two separate alarms. The CO Alarm is not designed to detect fire or any other gas. It will only indicate the presence of carbon monoxide gas at the sensor. Carbon monoxide gas may be present in other areas. The Smoke Alarm will only indicate the presence of smoke that reaches the sensor. The Smoke Alarm is not designed to sense gas, heat or flames.

WARNING!

- This unit will not operate without battery power. The Smoke/CO Alarm cannot work until you activate the battery power pack.
- NEVER ignore any alarm. See "If Your Smoke/CO Alarm Sounds" for more information on how to respond to an alarm. Failure to respond can result in injury or death.
- The Silence Features are for your convenience only and will not correct a problem. See "Using the Silence Features" for details. Always check your home for a potential problem after any alarm. Failure to do so can result in injury or death.
- Test this Smoke/CO Alarm once a week. If the Alarm ever fails to test correctly, have it replaced immediately! If the Alarm is not working properly, it cannot alert you to a problem.
- This product is intended for use in ordinary indoor locations of family living units. It is not designed to measure CO levels in compliance with Occupational Safety and Health Administration (OSHA) commercial or industrial standards. Individuals with medical conditions that may make them more sensitive to carbon monoxide should consider using warning devices which provide audible and visual signals for carbon monoxide concentrations under 30 ppm. For additional information on carbon monoxide and your medical condition contact your physician.

STEP BY STEP GUIDE TO PROGRAMMING THIS ALARM

For First Time and When Activating Alarm

Action:	Alarm Will Say:
1. Activate Alarm (If the battery has not been activated, perform Step 8 on page 3).	"Welcome, First Alert Carbon Monoxide and Smoke Alarm." "No location programmed" if first time or "Location, example: [Kitchen]" location programmed" after activating Alarm. "To select location, press and hold test button now."
2. Press & Hold Test Button if you would like to program the location or change the location of the alarm. Release button after Alarm responds.	"To save location, press and hold test button after location is heard." Alarm will speak list of locations (see below).
3. After you hear the location of where you are placing the Alarm, Press & Hold the Test Button.	"[Location, example: "Kitchen]" location saved." If no location is chosen: "No location saved."

Your Alarm has now been programmed for the location of your choice. Available locations: Basement, Office, Dining Room, Master Bedroom, Hallway, Child's Bedroom, Living Room, Guest Bedroom, Kitchen, Utility Room, Family Room, No Location

For Reprogramming
 When it is necessary to reprogram the Alarm after the unit has been activated and is in normal operation: Tap the Test button 5 times to reset the Alarm to again access the programming menu.

WHAT YOU WILL SEE AND HEAR WITH THIS ALARM

Under Normal Operations
Voice: Silent
Power LED: Flashes Green once a minute
Horn: Silent

When You Install The Alarm
Voice: "Testing." "Warning, evacuate smoke in [Location, example: "Kitchen"]. Evacuate."
Horn: 3 beeps, pause, 3 beeps, voice
Power LED: Flashes Red followed by
Voice: "Warning, evacuate carbon monoxide in [Location, example: "Kitchen"]. Evacuate."
Horn: 4 beeps, pause, 4 beeps, voice
LED: Flashes Red

If Battery Becomes Low
Voice: "Please see manual." Repeated every 5 hours
Horn: chirps once a minute
Power LED: Flashes Green approximately once a minute

If Alarm is Not Operating Properly
Voice: "Detector error in [Location, example "Kitchen"], please see manual." Repeated every 5 hours
Horn: 3 chirps every minute
LED: Three Green flashes approximately once a minute

Alarm has reached its End of Life
Voice: "Detector error in [Location, example "Basement"], please see manual." Repeated every 5 hours
Horn: 5 chirps every minute
LED: Five Green flashes approximately once a minute

Alarm Levels of CO are Detected
Voice: "Warning, evacuate carbon monoxide in [Location, example: "Kitchen"]. Evacuate." ____ ppm."
Horn: 4 beeps, pause, 4 beeps, voice
LED: Flashes Red
***NOTE:** If unit goes into CO alarm, the regular 4-beeps chirp pause cycle will repeat for four minutes. After four minutes, the pause will increase to one minute.

Smoke is Detected
Voice: "Warning, evacuate smoke in [Location, example: "Kitchen"]. Evacuate."
Horn: 3 beeps, pause, 3 beeps, voice
LED: Flashes Red

Smoke Alarm is Silenced Voice: Silent. Horn: Off LED: Flashes Red	CO Alarm is Silenced Voice: Silent. Horn: Off LED: Flashes Red
--	---

INSTALLATION

WHERE TO INSTALL THIS ALARM

Minimum coverage for Smoke Alarms, as recommended by the National Fire Protection Association (NFPA), is one Smoke Alarm on every floor, in every sleeping area, and in every bedroom (See "Regulatory Information For Smoke Alarms" for details on the NFPA recommendations).

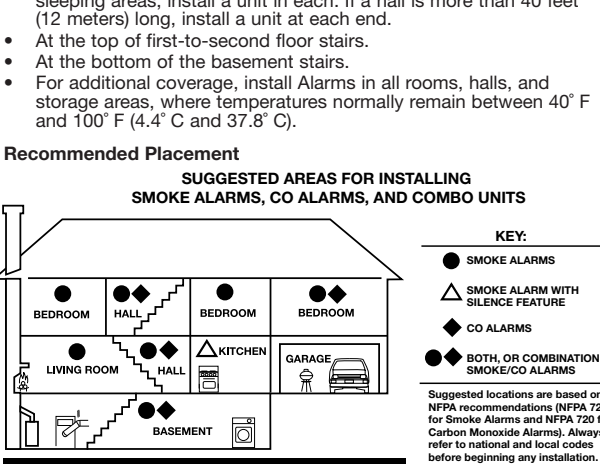
For CO Alarms, the National Fire Protection Association (NFPA) recommends that a CO Alarm should be centrally located outside of each separate sleeping area in the immediate vicinity of the bedrooms. For added protection, install additional CO Alarms in each separate bedroom, and on every level of your home.

NOTE: For added protection, install an additional Smoke/CO Alarm at least 15 feet (4.6 meters) away from the furnace or fuel burning heat source where possible. In smaller homes or in manufactured homes where this distance cannot be maintained, install the Alarm as far away as possible from the furnace or other fuel burning source. Installing the Alarm closer than 15 feet (4.6 meters) will not harm the Alarm, but may increase the frequency of unwanted alarms.

In general, install combination Smoke and Carbon Monoxide Alarms:

- On every level of your home, including finished attics and basements.
- Inside every bedroom, especially if people sleep with the door partly or completely closed.
- In the hall near every sleeping area. If your home has multiple sleeping areas, install a unit in each. If a hall is more than 40 feet (12 meters) long, install a unit at each end.
- At the top of first-to-second floor stairs.
- At the bottom of the basement stairs.
- For additional coverage, install Alarms in all rooms, halls, and storage areas, where temperatures normally remain between 40° F and 100° F (4.4° C and 37.8° C).

Recommended Placement



In new construction AC and AC/DC smoke alarms MUST be interconnected to meet NFPA recommendations.

- When installing on the wall, the top edge of Smoke Alarms should be placed between 4 inches (102 mm) and 12 inches (305 mm) from the wall/ceiling line. When installing on the ceiling, place the alarm as close to the ceiling as possible.
- In either case, install at least 4 inches (102 mm) from where the wall and ceiling meet. See "Avoiding Dead Air Spaces" for more information.

NOTE: For any location, make sure no door or other obstruction could keep carbon monoxide or smoke from reaching the Alarm. *Continued...*

INSTALLATION, Continued

Installing Smoke/CO Alarms in Mobile Homes

For minimum security install one Smoke/CO Alarm as close to each sleeping area as possible. For more security, put one unit in each room. Many mobile homes (especially those built before 1978) have little or no insulation. If your mobile home is not well insulated, or if you are unsure of the amount of insulation, it is important to install units on inside walls only.

WHERE THIS ALARM SHOULD NOT BE INSTALLED

Do NOT locate this Smoke/CO Alarm:

- In garages, furnace rooms, crawl spaces and unfinished attics. Avoid extremely dusty, dirty or greasy areas.
- Where combustion particles are produced. Combustion particles form when something burns. Areas to avoid include poorly ventilated kitchens, garages, and furnace rooms. Keep units at least 20 feet (6 meters) from the sources of combustion particles (stove, furnace, water heater, space heater) if possible. In areas where a 20-foot (6 meter) distance is not possible – in modular, mobile, or smaller homes, for example – it is recommended the Smoke Alarm be placed as far from these fuel-burning sources as possible. The placement recommendations are intended to keep these Alarms at a reasonable distance from a fuel-burning source, and thus reduce "unwanted" alarms. Unwanted alarms can occur if a Smoke Alarm is placed directly next to a fuel-burning source. Ventilate these areas as much as possible.
- Within 5 feet (1.5 meters) of any cooking appliance. In air streams near children's beds. Air currents can draw cooking smoke into the smoke sensor and cause unwanted alarms.
- In extremely humid areas. This Alarm should be at least 10 feet (3 meters) from a shower, sauna, humidifier, vaporizer, dishwasher, laundry room, utility room, or other source of high humidity.
- In direct sunlight.
- In turbulent air, like near ceiling fans or open windows. Blowing air may prevent CO or smoke from reaching the sensors.
- In areas where temperature is colder than 40° F (4.4° C) or hotter than 100° F (37.8° C). These areas include non-airconditioned crawl spaces, unfinished attics, uninsulated or poorly insulated ceilings, porches, and garages.
- In insect infested areas. Insects can clog the openings to the sensing chamber.
- Less than 12 inches (305 mm) away from fluorescent lights. Electrical "noise" can interfere with the sensor.
- In "dead air" spaces. See "Avoiding Dead Air Spaces".

AVOIDING DEAD AIR SPACES

"Dead air" spaces may prevent smoke from reaching the Smoke/CO Alarm. To avoid dead air spaces, follow installation recommendations below.

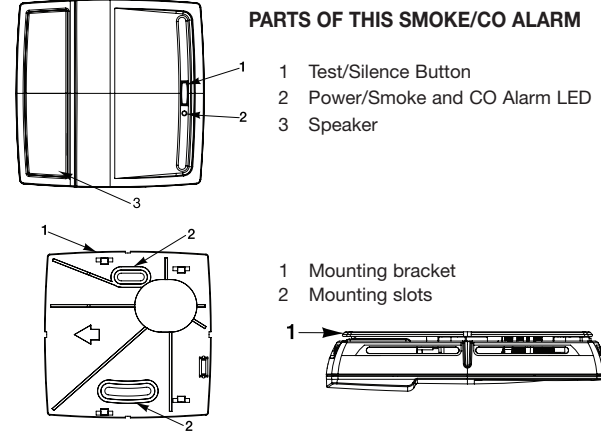
On ceilings, install Smoke/CO Alarms as close to the center of the ceiling as possible. If this is not possible, install the Smoke/CO Alarm at least 4 inches (102 mm) from the wall or corner.

For wall mounting (if allowed by building codes), the top edge of Smoke/CO Alarms should be placed between 4 inches (102 mm) and 12 inches (305 mm) from the wall/ceiling line. Below typical "dead air" spaces.

On a peaked, gabled, or cathedral ceiling, install first Smoke/CO Alarm within 3 feet (0.9 meters) of the peak of the ceiling, measured horizontally. Additional Smoke/CO Alarms may be required depending on the length, angle, etc. of the ceiling's slope. Refer to NFPA 72 for details on requirements for sloped or peaked ceilings.

HOW TO INSTALL THIS ALARM

IMPORTANT!
 This combination Smoke/CO Alarm was designed to be mounted on the ceiling or wall. It is not a tabletop device. You must install this device on the ceiling or wall as outlined below. Read "Where To Install This Alarm" before starting.



Tools you will need: pencil, drill with 3/16" or 5mm drill bit, flathead screwdriver, hammer.

CAUTION!

- Do not install this unit over an electrical junction box. Air currents around junction boxes can prevent smoke from reaching the sensing chamber and prevent the unit from alarming. Only AC powered units are intended for installation over junction boxes.

NOTE: Be sure to mount the product in the orientation specified in the next steps as this provides the most stability for mounting the product to the wall or ceiling.

FOLLOW THESE SIMPLE STEPS:

- Turn alarm upside down so the circular shape is located in the upper left corner of the alarm.
- If mounting bracket is attached to alarm, lift to separate it from the base.
- Hold the mounting bracket against the ceiling (or wall) so the arrow located on the mounting plate is pointing to the left. (The circular shape will now be in upper right-hand corner). Trace around the insides of the mounting slots.
- Put the unit where it won't get covered with dust when you drill the mounting holes.
- Using a 3/16" (5 mm) drill bit, drill a hole through the center of the oval outline you traced in step #3.
- Insert the plastic screw anchors (in the plastic bag with screws) into the holes. Tap the screw anchors gently with a hammer, if necessary, until they are flush with the ceiling or wall.
- Line the mounting bracket up over the plastic screw anchors. Screw the mounting bracket to the ceiling or wall through the mounting slots using the two screws provided.
- Activate the battery. Move the activation switch to "ON" position against the wall. Unit will not mount on mounting bracket unless activated. Once unit is activated, it cannot be turned off.

NOTE: After you activate the battery, the power indicator light may flash. (If the unit alarms, the light will blink rapidly, and the horn will repeatedly sound 3 beeps, pause, 3 beeps.)

- Attach the Smoke/CO Alarm to the mounting bracket. Hold alarm as shown in diagram. Place alarm on mounting bracket and slide to the right until locked into position.

NOTE: Once the Smoke/CO Alarm is snapped onto the mounting bracket, you can rotate the Smoke/CO Alarm to adjust the alignment.

- Test the Alarm. See "Weekly Testing."

IF YOUR SMOKE/CO ALARM SOUNDS
WHAT TO DO FIRST—IDENTIFY THE TYPE OF ALARM

Type of Alarm	What You See and Hear
Carbon Monoxide (CO)	Voice: "Warning, evacuate carbon monoxide in [Location, example: "Kitchen"]. Evacuate." ____ ppm." Horn: 4 beeps, pause, 4 beeps, voice LED: Flashes Red
Smoke	Voice: "Warning, evacuate smoke in [Location, example: "Kitchen"]. Evacuate." Horn: 3 beeps, pause, 3 beeps, voice LED: Flashes Red

IF THE CO ALARM SOUNDS

"ALARM-MOVE TO FRESH AIR!"
 If you hear the CO alarm sound and the red light is flashing, move everyone to a source of fresh air. DO NOT deactivate the Alarm!

WARNING!
 Actuation of your CO Alarm indicates the presence of carbon monoxide (CO) which can kill you. In other words, when your CO Alarm sounds, you must not ignore it!

IF THE CO ALARM SIGNAL SOUNDS:

- Press the Test/Silence button.
- Call your emergency services, fire department or 911. Write down the number of your local emergency service here.
- Immediately move to fresh air—outdoors or by an open door or window. Do a head count to check that all persons are accounted for. Do not re-enter the premises, or move away from the open door or window until the emergency services responder has arrived, the premises have been aired out, and your CO Alarm remains in its normal condition.
- After following steps 1-3, if your CO Alarm reactivates within a 24-hour period, repeat steps 1-3 and call a qualified appliance technician to investigate for sources of CO from fuel-burning equipment and appliances, and inspect for proper operation of this equipment. If problems are identified during this inspection have the equipment serviced immediately. Note any combustion equipment not inspected by the technician, and consult the manufacturers' instructions, or contact the manufacturers directly, for more information about CO safety and this equipment. Make sure that motor vehicles are not, and have not, been operating in an attached garage or adjacent to the residence. Write down the number of a qualified appliance technician here:

NOTE: A qualified appliance technician is defined as "a person, firm, corporation, or company that either in person or through a representative, is engaged in and responsible for the installation, testing, servicing, or replacement of heating, ventilation, air conditioning (HVAC) equipment, combustion appliances and equipment, and/or gas fireplaces or other decorative combustion equipment."

AFTER AN ALARM

After the emergency responders arrive, the premises aired out, and your CO Alarm remains in its normal condition, you can check what the highest carbon monoxide level sensed was:

Action:	Alarm Will Say:
1. Press & Hold Test Button	"Highest carbon monoxide level was ____ ppm. Please see manual." "To clear highest carbon monoxide level, press and hold test button now."
2. Press & Hold Test Button, if you would like to clear the highest level sensed. If you would like to keep the highest level in memory, do not press anything.	"Highest carbon monoxide level cleared." Alarm will say nothing.

IF THE SMOKE ALARM SOUNDS
RESPONDING TO AN ALARM

WARNING!

- If the unit alarms and you are not testing the unit, it is warning you of a potentially dangerous situation that requires your immediate attention. NEVER ignore any alarm. Ignoring the alarm may result in injury or death.
- Never remove the batteries from a battery operated Smoke/CO Alarm to stop an unwanted alarm (caused by cooking smoke, etc.). Removing batteries disables the alarm so it cannot sense smoke, and removes your protection. Instead open a window or fan the smoke away from the unit. The alarm will reset automatically.
- If the unit alarms get everyone out of the house immediately.

WHAT TO DO IN CASE OF FIRE

- Don't panic; stay calm. Follow your family escape plan.
- Get out of the house as quickly as possible. Don't stop to get dressed or collect anything.
- Feel doors with the back of your hand before opening them. If a door is cool, open it slowly. Don't open a hot door. Keep doors and windows closed, unless you must escape through them.
- Cover your nose and mouth with a cloth (preferably damp). Take short, shallow breaths.
- Meet at your planned meeting place outside your home, and do a head count to make sure everybody got out safely.
- Call the Fire Department as soon as possible from outside. Give your address, then your name.
- Never go back inside a burning building for any reason. Contact your Fire Department for ideas on making your home safer.

WARNING!
 Alarms have various limitations. See "General Limitations of Smoke/CO Alarms" for details.

USING THE SILENCE FEATURES

WARNING!
 Never deactivate the unit to quiet an unwanted alarm. Deactivating the alarm disables the unit and removes your protection.

The Silence Feature is intended to temporarily silence the horn while you identify and correct the problem. Do not use the Silence Feature in emergency situations. It will not correct a CO problem or extinguish a fire.

The Silence Feature can temporarily quiet an unwanted alarm for several minutes. You can silence this Smoke/CO Alarm by pressing the Test/Silence button on the alarm cover for at least 3-5 seconds.

When the Test/Silence button is released, the Red LED blinks during the silence mode.

When the Smoke Alarm is Silenced	When the CO Alarm is Silenced
The Smoke Alarm will remain silent for up to 15 minutes, then return to normal operation. If the smoke has not cleared—or continues to increase—the device will go back into alarm.	The CO Alarm will remain silent for up to 4 minutes. After 4 minutes, if CO levels remain potentially dangerous the horn will start sounding again.

SILENCING THE LOW BATTERY WARNING

This silence feature can temporarily quiet the low battery warning "chirp" for up to 8 hours. You can silence the low battery warning "chirp" by pressing the Test/Silence button on the alarm cover.

Once the low battery warning "chirp" silence feature is activated, the unit continues to flash the Green light once a minute for 8 hours. After 8 hours, the low battery "chirp" will resume. **Replace the Alarm as soon as possible; this unit will not operate without battery power!**

To deactivate this feature: Press the Test/Silence button again. The unit will go into Test Mode and the low battery warning will resume (LED flashes and unit sounds "chirp" once a minute).

SILENCING THE END OF LIFE SIGNAL

This silence feature can temporarily quiet the End of Life warning "chirp" for up to 2 days. You can silence the End of Life warning "chirp" by pressing the Test/Silence button. The horn will chirp, acknowledging that the End of Life silence feature has been activated.

After approximately 2 days, the End of Life "chirp" will resume.

WEEKLY TESTING

WARNING!

- NEVER use an open flame of any kind to test this unit. You might accidentally damage or set fire to the unit or to your home. NEVER use vehicle exhaust! Exhaust may cause permanent damage and voids your warranty.
- DO NOT stand close to the Alarm when the horn is sounding. Exposure at close range may be harmful to your hearing. When testing, step away when horn starts sounding.

CAUTION!

It is important to test this unit every week to make sure it is working properly. Using the test button is the recommended way to test this Smoke/CO Alarm.

You can test this Smoke/CO Alarm by pressing and holding the Test/Silence button on the Alarm cover until Alarm Voice says "Testing" (typically 3-5 seconds).

During testing, you will see and hear the following sequence:

- The Alarm Voice will say "Testing." The Horn will sound 3 beeps, pause, 3 beeps. The Alarm Voice will say "Warning, evacuate smoke in [Location, example: "Kitchen"]. Evacuate." The Power LED flashes Red.
- Next the Horn will sound 4 beeps, pause, 4 beeps. The Alarm Voice will say "Warning, evacuate carbon monoxide in [Location, example: "Kitchen"]. Evacuate." The LED flashes Red.

If the unit does not alarm, make sure it has been activated correctly, and test again. If the unit still does not alarm, replace it immediately.

REGULAR MAINTENANCE

This unit has been designed to be as maintenance-free as possible, but there are a few simple things you must do to keep it working properly.

- Test it at least once a week.
- Clean the Smoke/CO Alarm at least once a month; gently vacuum the outside of the Smoke/CO Alarm using your household vacuum's soft brush attachment. A can of clean compressed air (sold at computer or office supply stores) may also be used. Follow manufacturer instructions for use. Test the Smoke/CO Alarm. Never use water, cleaners or solvents since they may damage the unit.
- If the Smoke/CO Alarm becomes contaminated by excessive dirt, dust and/or grime, and cannot be cleaned to avoid unwanted alarms, replace the unit immediately.
- Relocate the unit if it sounds frequent unwanted alarms. See "Where This Alarm Should Not Be Installed" for details.

IMPORTANT!

Actual battery service life depends on the Smoke/CO Alarm and the environment in which it is installed. Regardless of the manufacturer's suggested battery life, you MUST replace the Alarm immediately once the unit starts "chirping" (the "low battery warning").

TO PERMANENTLY DEACTIVATE THE SMOKE/CO ALARM

After 10 years of operation or Low Battery warning, deactivate the Alarm: Insert a tool below edge where shown and break tab. Then slide activation switch to DEACTIVATE mode.

NOTE: At end of life or low battery indication (chirp): unit must be put in to deactivation mode to deactivate remaining stored energy in battery. Unit will no longer function once put into this mode. Unit will resist re-mounting.

WHAT YOU NEED TO KNOW ABOUT CO
WHAT IS CO?

CO is an invisible, odorless, tasteless gas produced when fossil fuels do not burn completely, or are exposed to heat (usually fire). Electrical appliances typically do not produce CO. These fuels include: Wood, coal, charcoal, oil, natural gas, gasoline, kerosene, and propane.

Common appliances are often sources of CO. If they are not properly maintained, are improperly ventilated, or malfunction, CO levels can rise quickly. CO is a real danger now that homes are more energy efficient. "Air-tight" homes with added insulation, sealed windows, and other weatherproofing can "trap" CO inside.

SYMPTOMS OF CO POISONING

These symptoms are related to CO POISONING and should be discussed with ALL household members.
Mild Exposure: Slight headache, nausea, vomiting, fatigue ("flu-like" symptoms).
Medium Exposure: Throbbing headache, drowsiness, confusion, fast heart rate.
Extreme Exposure: Convulsions, unconsciousness, heart and lung failure. Exposure to Carbon Monoxide can cause brain damage, death.

IMPORTANT!

This CO Alarm measures exposure to CO over time. It alarms if CO levels are extremely high in short period of time, or if CO levels reach a certain minimum over a long period of time. The CO Alarm generally sounds an alarm before the onset of symptoms in average, healthy adults. Why is this important? Because you need to be warned of a potential CO problem while you can still react in time. In many reported cases of CO exposure, victims may be aware that they are not feeling well, but become disoriented and can no longer react well enough to exit the building or get help. Also, young children and pets may be the first affected. The average healthy adult might not feel any symptoms when the CO Alarm sounds. However, people with cardiac or respiratory problems, infants, unborn

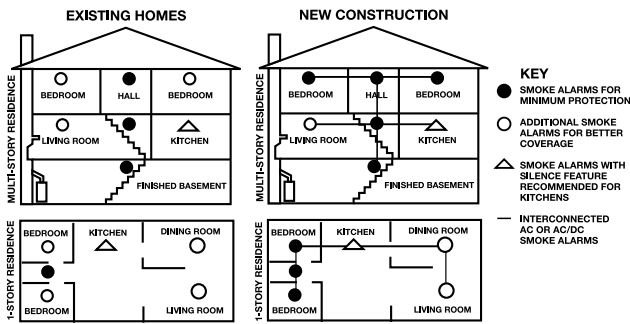
RECOMMENDED LOCATIONS FOR SMOKE ALARMS, Continued

More specifically, install Smoke Alarms:

- On every level of your home, including finished attics and basements.
- Inside every bedroom, especially if people sleep with the door partly or completely closed.
- In the hall near every sleeping area. If your home has multiple sleeping areas, install a unit in each. If a hall is more than 40 feet long (12 meters), install a unit at each end.
- At the top of the first-to-second floor stairway, and at the bottom of the basement stairway.

IMPORTANT!

Specific requirements for Smoke Alarm installation vary from state to state and from region to region. Check with your local Fire Department for current requirements in your area. **It is recommended AC or AC/DC units be interconnected for added protection.**



AGENCY PLACEMENT RECOMMENDATIONS

Standards: Underwriters Laboratories Inc. Single and Multiple Station Smoke Alarms 217.

NFPA 72 Chapter 29

"For your information, the **National Fire Alarm and Signaling Code**, NFPA 72, reads as follows:"

29.5.1* Required Detection.

29.5.1.1* Where required by other governing laws, codes, or standards for a specific type of occupancy, approved single and multiple-station smoke alarms shall be installed as follows:

- (1) In all sleeping rooms and guest rooms
- (2) Outside of each separate dwelling unit sleeping area, within 21 ft (6.4 m) of any door to a sleeping room, with the distance measured along a path of travel
- (3) On every level of a dwelling unit, including basements
- (4) On every level of a residential board and care occupancy (small facility), including basements and excluding crawl spaces and unfinished attics
- (5) In the living area(s) of a guest suite
- (6) In the living area(s) of a residential board and care occupancy (small facility)

(Reprinted with permission from NFPA 72[®], National Fire Alarm and Signaling Code Copyright © 2010 National Fire Protection Association, Quincy, MA 02269. This reprinted material is not the complete and official position of the National Fire Protection Association, on the referenced subject which is represented only by the standard in its entirety). (National Fire Alarm and Signaling Code[®] and NFPA 72[®] are registered trademarks of the National Fire Protection Association, Inc., Quincy, MA 02269).

California State Fire Marshal (CSFM)

Early warning detection is best achieved by the installation of fire detection equipment in all rooms and areas of the household as follows: A Smoke Alarm installed in each separate sleeping area (in the vicinity, but outside bedrooms), and Heat or Smoke Alarms in the living rooms, dining rooms, bedrooms, kitchens, hallways, finished attics, furnace rooms, closets, utility and storage rooms, basements, and attached garages.

ABOUT SMOKE ALARMS

Battery (DC) powered Smoke Alarms: Provide protection even when electricity fails, provided the batteries are fresh and correctly installed. Units are easy to install, and do not require professional installation.

AC powered Smoke Alarms: Can be interconnected so if one unit senses smoke, all units alarm. They do not operate if electricity fails. **AC with battery (DC) back-up:** will operate if electricity fails, provided the batteries are fresh and correctly installed. AC and AC/DC units must be installed by a qualified electrician.

Smoke/CO Alarms for Solar or Wind Energy users and battery backup power systems: AC powered Smoke/CO Alarms should only be operated with true or pure sine wave inverters. Operating this Alarm with most battery-powered UPS (uninterruptible power supply) products or square wave or "quasi sine wave" inverters will damage the Alarm. If you are not sure about your inverter or UPS type, please consult with the manufacturer to verify.

Smoke Alarms for the hearing impaired: Special purpose Smoke Alarms should be installed for the hearing impaired. They include a visual alarm and an audible alarm horn, and meet the requirements of the Americans With Disabilities Act. Can be interconnected so if one unit senses smoke, all units alarm.

Smoke alarms are not to be used with detector guards unless the combination has been evaluated and found suitable for that purpose. All these Smoke Alarms are designed to provide early warning of fires if located, installed and cared for as described in the user's manual, and if smoke reaches the Alarm. If you are unsure which type of Smoke Alarm to install, refer to National Fire Protection Association (NFPA) Standard 72 (National Fire Alarm and Signaling Code) and NFPA 101 (Life Safety Code), National Fire Protection Association, One Batterymarch Park, Quincy, MA 02269-9101. Local building codes may also require specific units in new construction or in different areas of the home.

SPECIAL COMPLIANCE CONSIDERATIONS

This Smoke Alarm is suitable for use in apartments, condominiums, townhouses, hospitals, day care facilities, health care facilities, boarding houses, group homes and dormitories provided a primary fire detection system already exists to meet fire detection requirements in common areas like lobbies, hallways, or porches. Using this Smoke Alarm in common areas may not provide sufficient warning to all residents or meet local fire protection ordinances/regulations.

This Smoke Alarm alone is not a suitable substitute for complete fire detection systems in places housing many people—like apartment buildings, condominiums, hotels, motels, dormitories, hospitals, health care facilities, nursing homes, day care facilities, or group homes of any kind. It is not a suitable substitute for complete fire detection systems in warehouses, industrial facilities, commercial buildings, and special-purpose non-residential buildings which require special fire detection and alarm systems. Depending on the building codes in your area, this Smoke Alarm may be used to provide additional protection in these facilities.

In new construction, most building codes require the use of AC or AC/DC powered Smoke Alarms only. In existing construction, AC, AC/DC, or DC powered Smoke Alarms can be used as specified by local building codes. Refer to NFPA 72 (National Fire Alarm and Signaling Code) and NFPA 101 (Life Safety Code), local building codes, or consult your Fire Department for detailed fire protection requirements in buildings not defined as "households".

HUD MAP Program

Certain HUD battery powered Smoke Alarm applications, especially those that fall under HUD 223(f) MAP (Multi-family Accelerated Processing), may require a 10 Year sealed tamper resistant battery. This alarm does not meet that requirement. Substitute First Alert SA340B.

Continued...

SPECIAL COMPLIANCE CONSIDERATIONS, Continued

FCC Compliance

This equipment has been tested and found to comply with the limits for a Class B digital device, pursuant to Part 15 of the FCC rules. These limits are designed to provide reasonable protection against harmful interference in a residential installation. This equipment generates, uses and can radiate radio frequency energy and, if not installed and used in accordance with the instructions, may cause harmful interference to radio communications.

However, there is no guarantee that the interference will not occur in a particular installation. If this equipment does cause harmful interference to radio or television reception, which can be determined by turning the equipment off and on, the user is encouraged to try to correct the interference by one or more of the following measures:

- Reorient or relocate the receiving antenna.
- Increase the separation between the equipment and receiver.
- Connect the equipment into an outlet on a circuit different from that of the receiver.
- Consult the dealer or an experienced radio or TV technician for help.

Warning: Changes or modifications to the product, not expressly approved by First Alert / BRK Brands, Inc., could void the user's authority to operate the equipment.

This device complies with Part 15 of the FCC Rules. Operation is subject to the following two conditions: (1) this device may not cause harmful interference, and (2) this device must accept any interference received, including interference that may cause undesired operation.

GENERAL LIMITATIONS OF SMOKE/CO ALARMS

This Smoke/CO Alarm is intended for residential use. It is not intended for use in industrial applications where Occupational Safety and Health Administration (OSHA) requirements for Carbon Monoxide Alarms must be met. The Smoke Alarm portion of this device is not intended to alert hearing impaired residents. Special purpose Smoke Alarms should be installed for hearing impaired residents (CO Alarms are not yet available for the hearing impaired).

Smoke/CO Alarms may not waken all individuals. Practice the escape plan at least twice a year, making sure that everyone is involved – from kids to grandparents. Allow children to master fire escape planning and practice before holding a fire drill at night when they are sleeping. If children or others do not readily waken to the sound of the Smoke/CO Alarm, or if there are infants or family members with mobility limitations, make sure that someone is assigned to assist them in fire drill and in the event of an emergency. It is recommended that you hold a fire drill while family members are sleeping in order to determine their response to the sound of the Smoke/CO Alarm while sleeping and to determine whether they may need assistance in the event of an emergency.

Smoke/CO Alarms cannot work without power. Battery operated units cannot work if the batteries are missing, disconnected or dead, if the wrong type of batteries are used, or if the batteries are not installed correctly. AC units cannot work if the AC power is cut off for any reason (open fuse or circuit breaker, failure along a power line or at a power station, electrical fire that burns the electrical wires, etc.). If you are concerned about the limitations of battery or AC power, install both types of units.

This Smoke/CO Alarm will not sense smoke or CO that does not reach the sensors. It will only sense smoke or CO at the sensor. Smoke or CO may be present in other areas. Doors or other obstructions may affect the rate at which CO or smoke reaches the sensors. If bedroom doors are usually closed at night, we recommend you install an alarm device (Combination CO and Smoke Alarm, or separate CO Alarms and Smoke Alarms) in each bedroom and in the hallway between them.

This Smoke/CO Alarm may not sense smoke or CO on another level of the home. Example: This alarm device, installed on the second floor, may not sense smoke or CO in the basement. For this reason, one alarm device may not give adequate early warning. Recommended minimum protection is one alarm device in every sleeping area, every bedroom, and on every level of your home. Some experts recommend battery powered Smoke and CO Alarms be used in conjunction with interconnected AC powered Smoke Alarms. For details, see "About Smoke Alarms" for details.

Smoke/CO Alarms may not be heard. The alarm horn loudness meets or exceeds current UL standards of 85 dB at 10 feet (3 meters). However, if the Smoke/CO Alarm is installed outside the bedroom, it may not wake up a sound sleeper or one who has recently used drugs or has been drinking alcoholic beverages. This is especially true if the door is closed or only partly open. Even persons who are awake may not hear the alarm horn if the sound is blocked by distance or closed doors. Noise from traffic, stereo, radio, television, air conditioner, or other appliances may also prevent alert persons from hearing the alarm horn. This Smoke/CO Alarm is not intended for people who are hearing impaired.

The Alarm may not have time to alarm before the fire itself causes damage, injury, or death, since smoke from some fires may not reach the unit immediately. Examples of this include persons smoking in bed, children playing with matches, or fires caused by violent explosions resulting from escaping gas.

This Smoke/CO Alarm is not a substitute for life insurance. Though this Smoke/CO Alarm warns against increasing CO levels or the presence of smoke, BRK Brands, Inc. does not warrant or imply in any way that they will protect lives. Homeowners and renters must still insure their lives.

This Smoke/CO Alarm has a limited life. Although this Smoke/CO Alarm and all of its parts have passed many stringent tests and are designed to be as reliable as possible, any of these parts could fail at any time. Therefore, you must test this device weekly. The unit should be replaced immediately if it is not operating properly.

This Smoke/CO Alarm is not foolproof. Like all other electronic devices, this Smoke/CO Alarm has limitations. It can only detect smoke or CO that reaches the sensors. It may not give early warning of the source of smoke or CO in a remote part of the home, away from the alarm device.

TROUBLESHOOTING GUIDE		
If the Alarm...	Problem...	You should...
Horn "chirps" about once per minute; Voice: "Please see manual" every 5 hours	Low battery warning.	Immediately replace the Alarm.
Horn sounds three "chirps" every minute; Voice: "Detector error in [Location, example "Kitchen"] please see manual" repeated every 5 hours; LED has 3 Green flashes with "chirps".	MALFUNCTION SIGNAL. Device is not working properly, and needs to be replaced.	Units under warranty should be returned to manufacturer for replacement. See "Limited Warranty" for details.
The light flashes GREEN and the horn sounds 5 "chirps" every minute; Voice: "Detector error in [Location, example "Basement"], please see manual." Repeated every 5 hours.	END OF LIFE SIGNAL. Alarm needs to be replaced.	Immediately replace the Alarm.
Carbon Monoxide Alarm ONLY: CO Alarm goes back into alarm 4 minutes after you silence it.	CO levels indicate a potentially dangerous situation.	IF YOU ARE FEELING SYMPTOMS OF CO POISONING, EVACUATE your home and call 911 or the Fire Department. Refer to "If The CO Alarm Sounds" for details.
CO Alarm sounds frequently even though no high levels of CO are revealed in an investigation.	The CO Alarm may be improperly located. Refer to "Where to Install This Alarm" for details.	Relocate your Alarm. If frequent alarms continue, have home rechecked for potential CO problems. You may be experiencing an intermittent CO problem.
Smoke Alarm ONLY: Smoke Alarm sounds when no smoke is visible.	Unwanted alarm may be caused by non-emergency source like cooking smoke.	Silence Alarm using manual button; clean the Alarm's cover with a soft, clean cloth. If frequent unwanted alarms continue, relocate your Alarm. Alarm may be too close to a kitchen, cooking appliance, or steamy bathroom.

If you have questions that cannot be answered by reading this manual, call Consumer Affairs at 1-800-323-9005, M-F 7:30 a.m. to 5:00 p.m. (CST)

LIMITED WARRANTY

BRK Brands, Inc., ("BRK") the maker of First Alert[®] brand products warrants that for a period of ten years from the date of purchase, this product will be free from defects in material and workmanship. BRK, at its option, will repair or replace this product or any component of the product found to be defective during the warranty period. Replacement will be made with a new or remanufactured product or component. If the product is no longer available, replacement may be made with a similar product of equal or greater value. This is your exclusive warranty. This warranty is valid for the original retail purchaser from the date of initial retail purchase and is not transferable. Keep the original sales receipt. Proof of purchase is required to obtain warranty performance. BRK dealers, service centers, or retail stores selling BRK products do not have the right to alter, modify or any way change the terms and conditions of this warranty.

This warranty does not cover normal wear of parts or damage resulting from any of the following: negligent use or misuse of the product, use on improper voltage or current, use contrary to the operating instructions, disassembly, repair or alteration by anyone other than BRK or an authorized service center. Further, the warranty does not cover Acts of God, such as fire, flood, hurricanes and tornadoes or any batteries that are included with this unit.

BRK shall not be liable for any incidental or consequential damages caused by the breach of any express or implied warranty. Except to the extent prohibited by applicable law, any implied warranty of merchantability or fitness for a particular purpose is limited in duration to the duration of the above warranty. Some states, provinces or jurisdictions do not allow the exclusion or limitation of incidental or consequential damages or limitations on how long an implied warranty lasts, so the above limitations or exclusion may not apply to you. This warranty gives you specific legal rights, and you may also have other rights that vary from state to state or province to province.

How to Obtain Warranty Service

Service: If service is required, do not return the product to your retailer. In order to obtain warranty service, contact the Consumer Affairs Division at 1-800-323-9005, 7:30 AM - 5:00 PM Central Standard Time, Monday through Friday. To assist us in serving you, please have the model number and date of purchase available when calling.

For Warranty Service return to: 25 Spur Drive, El Paso, TX 79906

Disposal: Waste electrical products should not be disposed of with regular household waste. Please recycle where facilities exist. Check local requirements for disposal of Li-Ion electronic devices.

The Alarm should be deactivated before disposal. See page 5, "To Permanently Deactivate the Smoke/CO Alarm".

You can also return your Alarm to us for disposal. For return address see above.

Please include a note confirming the product is being returned for disposal.

For your records, please record:	Replace alarm 10 years after installation. Please write the date in the space provided:
Date Purchased: _____ / _____ Month/Year	_____ / _____ Month/Year
Where Purchased: _____	The alarm will also provide an audible End-of-Life Signal approximately 10 years after installation to remind you to replace the unit.
Date Installed: _____ / _____ Month/Year	The End-of-Life Signal can be silenced for up to 2 days. Do not unplug or deactivate the alarm until you get replacement.