

# First Alert®

MANUAL # M08-0266-004

[www.FirstAlert.com](http://www.FirstAlert.com)

# First Alert®

## 2025F / 2072F / 2073F



## DIGITAL ANTI-THEFT SAFE



INTERIOR LIGHT



DELTA HINGE



2 LOCKING BOLTS

MANUAL # M08-0266-004

## INDEX

Overview of Your Safe .....	1
Initial Set Up .....	3
Programming a Personal Passcode .....	3
Shelf and Mounting .....	4
Use, Care and Maintenance .....	5
Consumer Affairs .....	5
Limited Warranty .....	8

## FOR YOUR PROTECTION

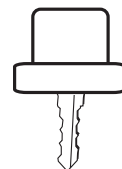
- ✓ Do not remove the serial number tag from the safe.
- ✓ Store emergency override keys away from safe, NEVER INSIDE.
- ✓ Record all safe identification numbers on Safe Identification Record (page 7).
- ✓ Save this manual and NEVER keep it inside the safe.

## OVERVIEW OF YOUR SAFE

### ***Congratulations!***

Your new First Alert® Anti-Theft Safe™ will provide secure protection for your valuables, important documents and other personal items. All First Alert® safes are designed and built using the highest manufacturing standards to ensure maximum user satisfaction under a variety of conditions. With proper care, your First Alert® safe will provide peace of mind for many years to come.

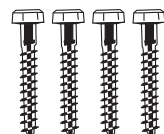
## PACKAGE CONTENTS



2 Knob Keys



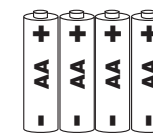
1 Emergency Override Key



4 Mounting Screws



1 Adjustable Shelf  
(2072F Only)



4 AA Alkaline Batteries

## YOU WILL NEED



1 Small Phillips Head Screwdriver



1 Socket Wrench



1 Drill with 5/16 in. Bit



1 Pencil

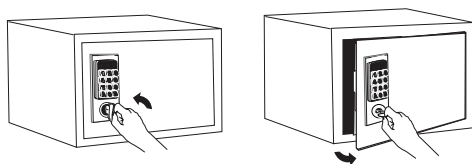
### **IMPORTANT: DO NOT RETURN SAFE TO STORE**

If you are missing parts, have difficulty programming your safe or have any other questions pertaining to its proper use and care, DO NOT RETURN your safe to the store. Please contact Consumer Affairs at **1-800-323-9005, 7:30 a.m. – 5 p.m.** Central Standard Time, Monday through Friday. To assist us in serving you, please have the model number and date of purchase available when calling.

## INITIAL SETUP

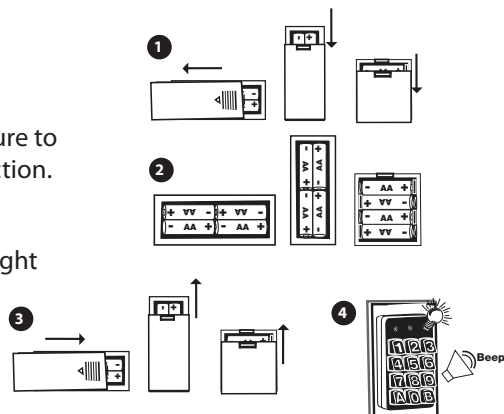
### EMERGENCY OVERRIDE KEY USE

Insert emergency override key into the lock, turn it counterclockwise and pull the door open.



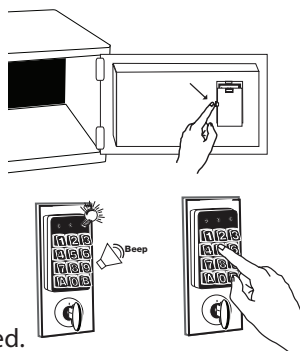
### BATTERY INSTALL

- 1 Remove battery cover.
- 2 Install four (4) AA batteries. Make sure to install them facing the proper direction.
- 3 Replace the battery cover.
- 4 When installed correctly, a yellow light will flash on the digital keypad.



## PROGRAMMING A PERSONAL PASSCODE

- 1 Open the safe door.
- 2 Press the reset button located on the left side of the battery compartment. (The lock will beep two times and the yellow light will blink two times).
- 3 Enter your new three to eight (3-8) digit passcode followed by 'A' or 'B'. (The lock will beep two times and the yellow light will blink two times).



NOTE: After pressing the reset button, your passcode must be programmed within 10 seconds, or it will not be accepted.

### LOCK-OUT PENALTY:

Green light means correct passcode has been entered. Rapid beeping yellow light means incorrect passcode has been entered. Entering incorrect passcode three (3) times will result in lock-out.

### IF LOCK-OUT OCCURS:

- 1 Wait 15 minutes before entering your (3-8) digit passcode.
- 2 Check to see if the batteries have been installed properly and replace if necessary.
- 3 Contact Consumer Affairs at 1-800-323-9005.

### FORGOTTEN PASSCODE

- 1 Insert override key, turn counterclockwise and pull the door open.
- 2 Follow instructions on Pg. 3 'PROGRAMMING A PERSONAL PASSCODE' to reset your passcode.

### OPENING SAFE

- 1 Insert knob key.
- 2 Enter your three to eight (3-8) digit passcode followed by 'A' or 'B'.
- 3 Turn the key clockwise and pull the door open.



### CLOSING SAFE

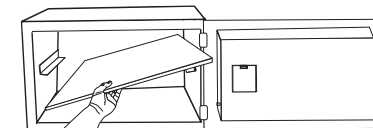
- 1 Push door closed.
- 2 Turn knob key counterclockwise fully into locked position.

**IMPORTANT** Turn the light switch off before closing the safe. Leaving the light switch on will result in loss of battery power.

## SHELF AND MOUNTING

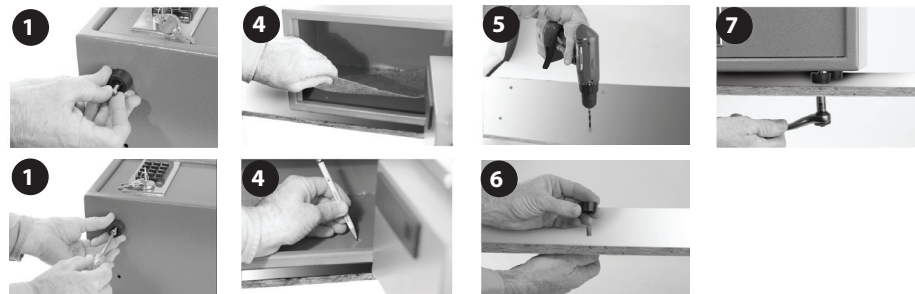
### INSTALLING THE SHELF (2072F ONLY)

Slide shelf into place on top of shelf racks.



### MOUNTING INSTRUCTIONS

- 1 Remove rubber feet and mounting screws from safe with Phillip's head screwdriver.
- 2 Place your safe where you want it to be mounted. Safe weighs (36.1 lbs - 2072F; 19.8 lbs. - 2073F; 13.2 lbs. - 2025F) when empty so be sure that if you're mounting on a shelf that it will support the weight.
- 3 Open your safe.
- 4 Remove the bottom carpet and find the screw holes. Mark the safe's placement through the holes with a pencil.
- 5 Drill holes in the shelf.
- 6 Place screws through holes in shelf and rubber feet.
- 7 Place safe on shelf over the screws and rubber feet. Use a socket wrench to tighten safe into place.



## USE, CARE AND MAINTENANCE

When properly maintained, your safe will continue to operate and accurately read the authorized passcode for many years. In order to ensure optimum performance of your safe, please follow these simple precautions:

### Battery Maintenance

- 1 Always purchase and use the batteries as specified by this User's manual.
- 2 Always replace **all** batteries at the same time. It is recommended to replace all batteries at least once a year or sooner depending on amount of use.
- 3 Always clean the battery contacts in the battery compartment and on the batteries before installing new batteries.
- 4 Always make sure all batteries match the polarity (+ and -) signs in the open battery compartment.
- 5 If your safe will not be used for an extended period of time, it is recommended that you remove the batteries.
- 6 Always promptly remove and properly discard of all used batteries.

**Interior Light Switch** - Turn the light switch off before closing the safe. Leaving the light on will shorten the life of the battery and disable the digital keypad. The override key will need to be utilized to unlock the safe.

**Clean Hands** - Never attempt to operate the digital keypad if your hands have excessive dirt, debris or liquids on them.

**Clean Safe** - To clean the surface of your safe, it is recommended that you use a mild cleaner (e.g., window cleaner) to avoid scratching or discoloring the surface. Always wipe dry and NEVER use abrasive cleansers on the safe or digital keypad.

**Moisture** - We recommend that you place delicate items such as pictures or intricate jewelry into an air-tight container before storing them in your safe. Avoid placing your safe in areas of high humidity. For optimum performance, the safe should be opened and aired out for at least 20 minutes every two weeks.

For future reference, store this Operation and Installation Guide in a secure area away from the safe. DO NOT DISCARD!

## CONSUMER AFFAIRS

### YOUR SAFE'S UNIQUE IDENTIFICATION NUMBERS

When contacting Consumer Affairs, you should be prepared to supply some important information that specifically identifies your safe. This information is extremely important to assuring prompt and accurate customer assistance.

It is strongly recommended that you identify and record the following information in the Safe Identification Record form located on page 7.

**MODEL NUMBER**

1

**SERIAL NUMBER**

2

**KEY NUMBER**

3

**Safe Identification Record**

Model Number \_\_\_\_\_ ← 1

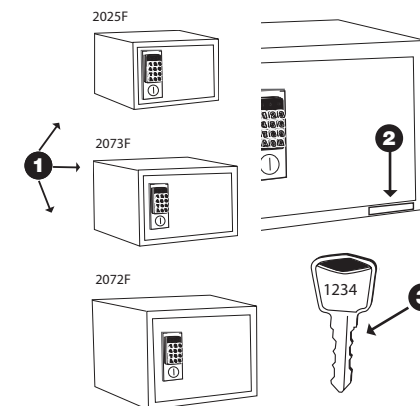
Serial Number \_\_\_\_\_ ← 2

Key Number \_\_\_\_\_ ← 3

Digital Passcode Record - Model 2025F, 2072F, 2073F

Your Passcode must be at least 3 digits and no more than 8 digits followed by the letter A or B.

									A
									B



### IMPORTANT DO NOT REMOVE TAGS

*In case your safe becomes inoperable or you lose your keys, these identification numbers will be needed to correct the problem. It is recommended that the number tags remain in place on the safe. If removal is necessary, then they should be attached to the inside back cover of this manual. Store in a safe and secure place for future reference.*

### HOW TO OBTAIN WARRANTY SERVICE

If service is required, do not return the product to your retailer. In order to obtain warranty service, contact Consumer Affairs at 1-800-323-9005, 7:30 a.m. – 5 p.m. Central Standard Time, Monday through Friday. To assist us in serving you, please have the model number, serial number and date of purchase available when calling.

**For Warranty Service return to:**

**First Alert**  
**Attn: Warranty Safe Returns**  
**23610 S Banning Blvd**  
**Carson, CA 90745**

**PLEASE CALL US AT 1-800-323-9005 TO  
 ESTABLISH A WARRANTY RETURN SET-UP**

**ORDERING REPLACEMENT KEYS**

If you lose the safe entry or Emergency Override keys or would like additional keys, you can purchase them from First Alert, Inc. You must supply the following information to assure accurate processing:

1. Name / Address / Telephone Number
2. Safe Model Number / Serial Number
3. Key Number (located on the key and on the Emergency Override Key Lock)
4. Notarized statement of ownership (a notary letter form can be printed off at [www.firstalert.com](http://www.firstalert.com))
5. Indicate number of keys requested

Please send all the information via fax at 630-851-7995 or mail First Alert, Inc., 3901 Liberty Street Road, Aurora, IL 60504-8122.

Checks or Money Orders are required for orders received by mail and should be made payable to First Alert. Contact our Consumer Affairs Department for costing information prior to ordering.

**Mail To: First Alert, Inc.**

**Attn: Consumer Affairs  
3901 Liberty Street Road  
Aurora, IL 60504-8122**

**SAFE IDENTIFICATION RECORD**

Model Number \_\_\_\_\_

Serial Number \_\_\_\_\_

Key Number \_\_\_\_\_

Digital Passcode Record \_\_\_\_\_

Your passcode must be at least three (3) digits and no more than eight (8) digits followed by the letter 'A' or 'B'.

**LIMITED WARRANTY**

BRK Brands, Inc., ("BRK") warrants that for a period of five (5) years from the date of purchase, this product will be free from defects in material and workmanship. BRK, at its sole option, will repair or replace this product or any component of the product found to be defective during the warranty period. Replacement or repair will be made with a new or remanufactured product or component. If the product is no longer available, replacement may be made with a similar product of equal or greater value. This is your exclusive warranty.

This warranty is only valid for the original retail purchaser from the date of initial retail purchase and is not transferable. You must keep the original sales receipt. Proof of purchase is required to obtain warranty performance. BRK dealers, service centers, or retail stores selling this product do not have the right to alter, modify or in any way change the terms and conditions of this warranty.

This warranty does not apply to the finish on the product. This warranty does not cover normal wear and tear of parts or damage resulting from any of the following: negligent use or misuse of the product, use contrary to the operating instructions, disassembly, repair or alteration by anyone other than BRK or an authorized service center, improper installation, or exposure to extremes of heat or humidity. Further, the warranty does not cover Acts of God, such as fire, flood, hurricanes and tornadoes.

BRK shall not be liable for any incidental or consequential damages caused by the breach of any express or implied warranty. BRK is also not responsible for: costs associated with removing or installing the product; damage or loss of the contents of the product; nor for the unauthorized removal of the contents; or damages incurred during shipment.

Except to the extent prohibited by applicable law, any implied warranty of merchantability or fitness for a particular purpose is limited in duration to the duration of the above Warranty Period. Some states, provinces or jurisdictions do not allow the exclusion or limitation of incidental or consequential damages or limitations on how long an implied warranty lasts, so the above limitations or exclusion may not apply to you. This warranty gives you specific legal rights, and you may also have other rights that vary from state to state, or province to province, or jurisdiction to jurisdiction.

If you have any questions that cannot be answered by reading this manual, call Consumer Affairs at 1-800-323-9005

© 2012 BRK Brands, Inc., a Jarden Corporation company (NYSE: JAH)  
3901 Liberty Street Road, Aurora, IL 60504-8122

All rights reserved.  
[www.FirstAlert.com](http://www.FirstAlert.com)

US PATENT NO. D557,875, 7,350,470  
OTHER PATENTS PENDING